

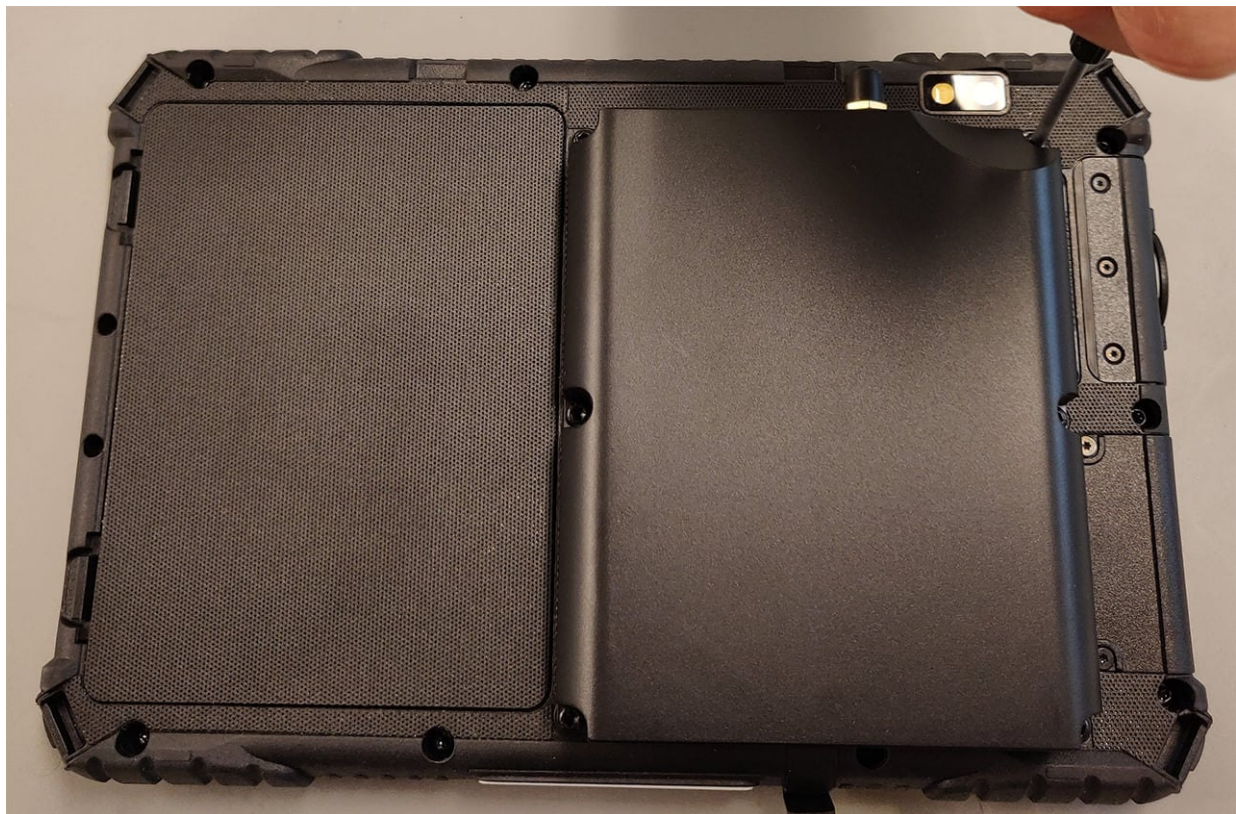
handheld

Installation manual for the ALGIZ 8X LRBT Expansion Backpack

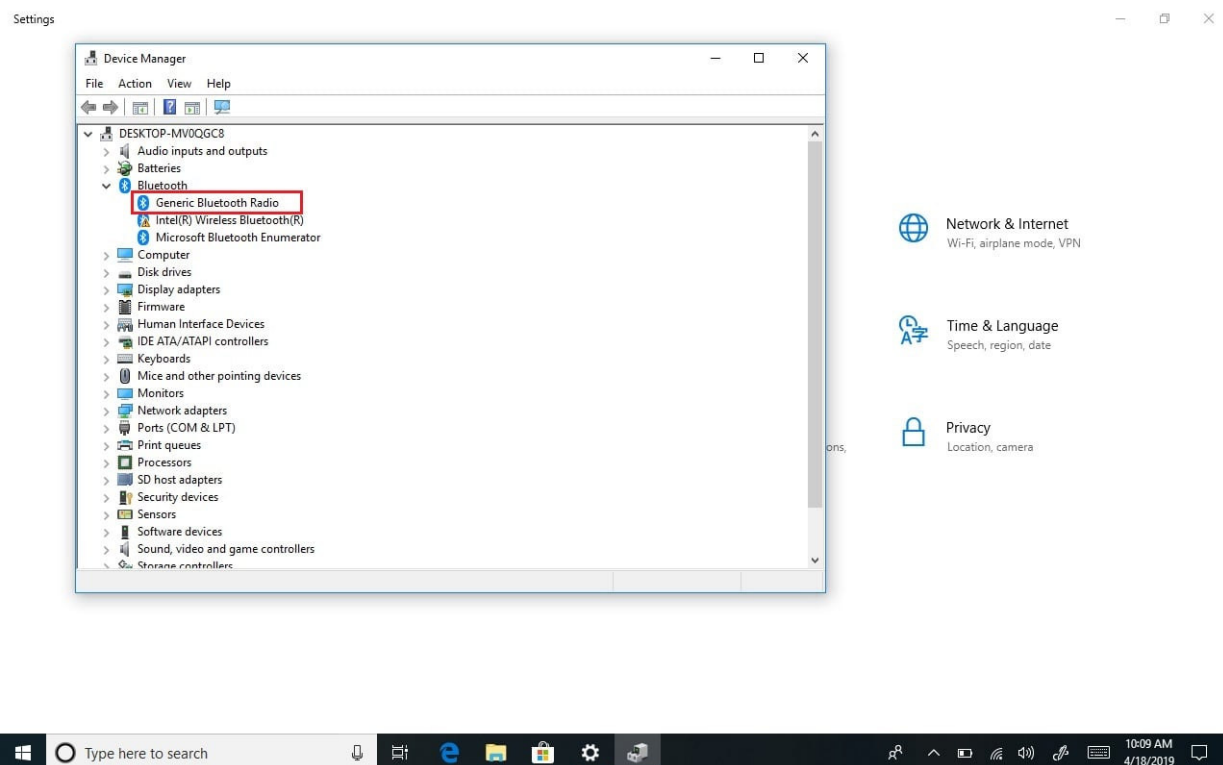
Last updated: April 18, 2019
Related products: [Algiz 8X](#)

Below you'll find installation instructions for the Algiz 8X LRBT expansion backpack.

1. Align the backpack with the x6 screws inserts and pogo pin bracket on the back of the Algiz 8X. Fasten it by using the x6 Torx screws supplied in the kit.

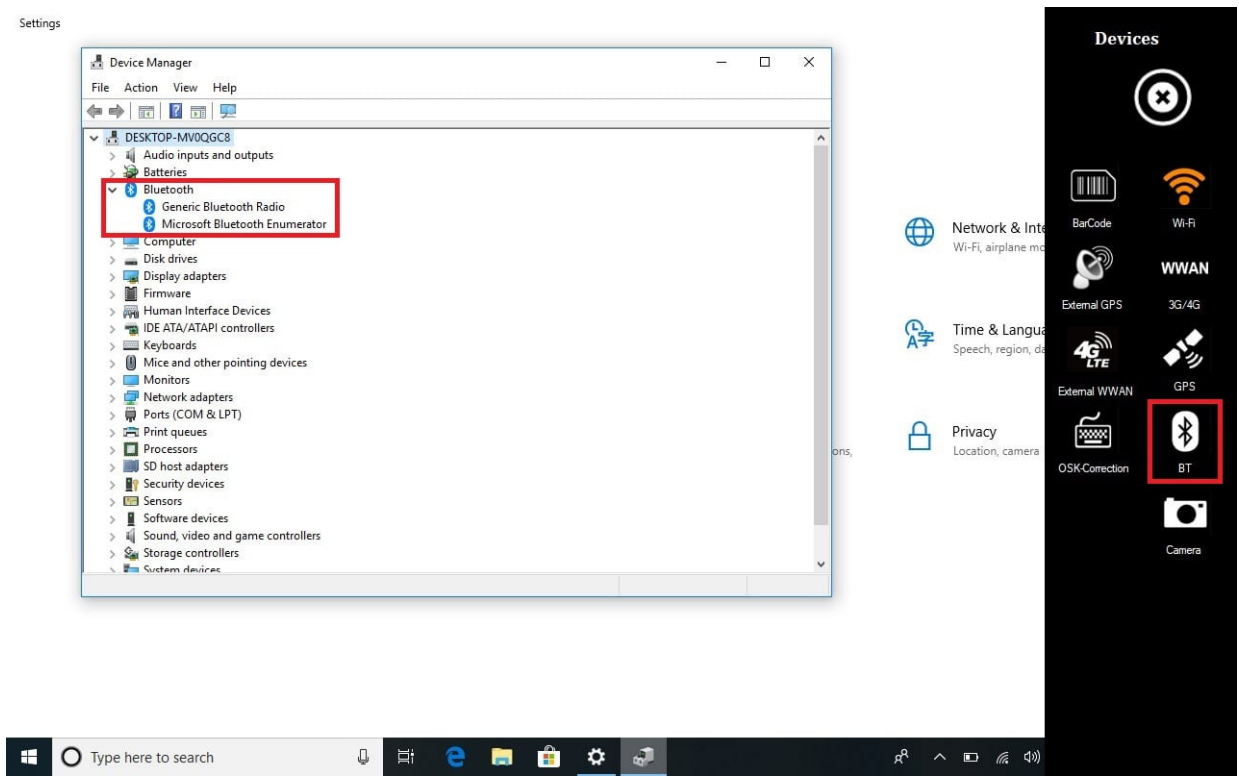


2. Power the tablet. Windows will automatically install the Generic Bluetooth Radio required. Double-check this via the **Device manager**.

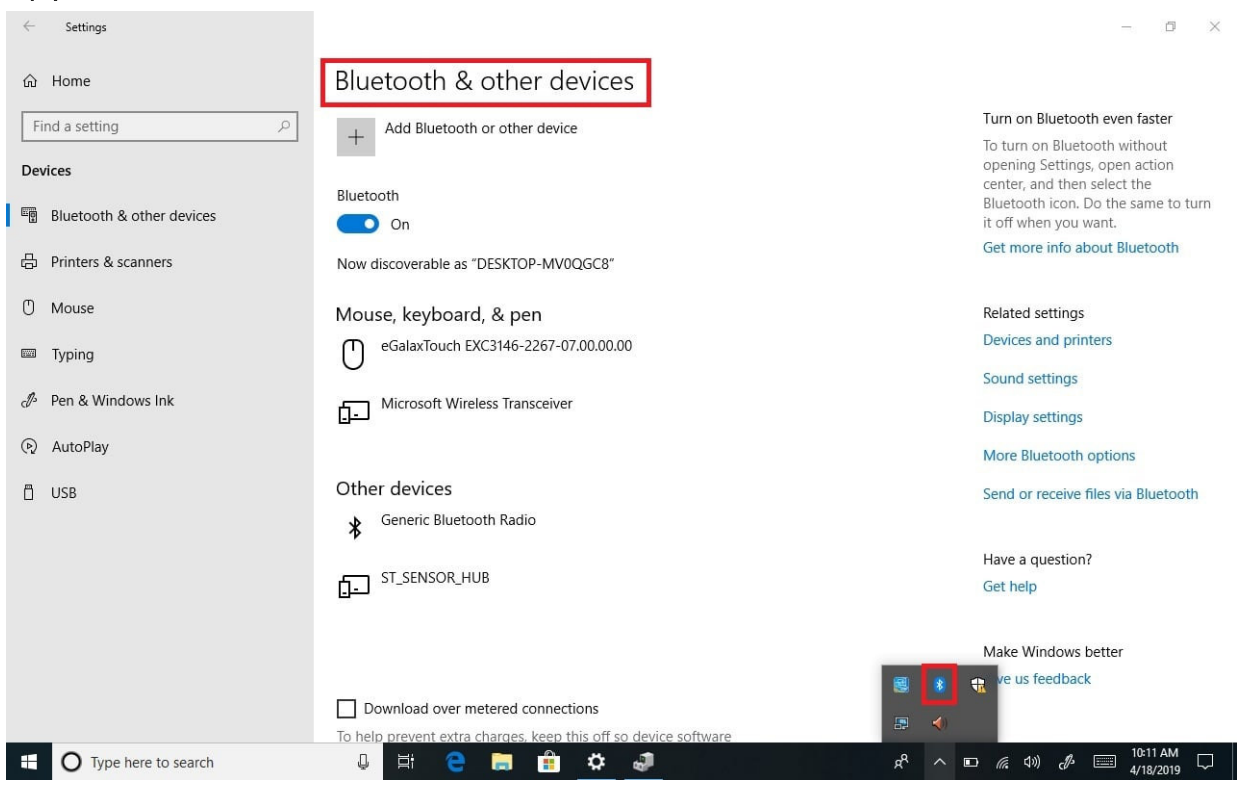


3. For the LRBT module to work we need to disable the internal module called Intel(R) Wireless Bluetooth(R). We will do this via Hottab since this disables the internal H/W module and prevents it from receiving any power.





4. Now we can look for devices to pair via the Windows Bluetooth applications as seen below.



Was this article helpful?

Two buttons for user feedback: a 'Yes' button with a smiley face icon and a 'No' button with a frowny face icon.



Copyright © 2021 Handheld Group. All rights reserved.

Images, texts and other material downloaded from the Handheld web pages may not be reproduced in any form, without prior written permission from the Handheld Group.

Algiz® and Nautiz® are registered trademarks of Handheld Group AB. | [Privacy Policy](#) | [GDPR](#) | [COVID-19 Updates](#) |

